

# Multivariate Volatility Impulse Response Analysis of GFC News Events

**David E. Allen**

School of Mathematics and Statistics University of Sydney and School of Business University of South Australia

**Michael McAleer**

Department of Quantitative Finance National Tsing Hua University, Taiwan And Econometric Institute Erasmus  
School of Economics Erasmus University Rotterdam and Tinbergen Institute, The Netherlands and  
Department of Quantitative Economics Complutense University of Madrid, Spain

**Robert Powell**

School of Business Edith Cowan University Perth, Australia

**AbhayK. Singh**

School of Business Edith Cowan University Perth, Australia

---

## Abstract

This paper applies the Hafner and Herwartz (2006) (hereafter HH) approach to the analysis of multivariate GARCH models using volatility impulse response analysis. The data set features ten years of daily returns series for the New York Stock Exchange Index and the FTSE 100 index from the London Stock Exchange, from 3 January 2005 to 31 January 2015. This period captures both the Global Financial Crisis (GFC) and the subsequent European Sovereign Debt Crisis (ESDC). The attraction of the HH approach is that it involves a novel application of the concept of impulse response functions, tracing the effects of independent shocks on volatility through time, while avoiding typical orthogonalization and ordering problems. Volatility impulse response functions (VIRF) provide information about the impact of independent shocks on volatility. HH's VIRF extends a framework provided by Koop et al. (1996) for the analysis of impulse responses. This approach is novel because it explores the effects of shocks to the conditional variance, as opposed to the conditional mean. HH use the fact that GARCH models can be viewed as being linear in the squares, and that multivariate GARCH models are known to have a VARMA representation with non-Gaussian errors. They use this particular structure to calculate conditional expectations of volatility analytically in their VIRF analysis. A Jordan decomposition of  $\Sigma_t$  is used to obtain independent and identically distributed innovations. A general issue in the approach is the choice of baseline volatilities. VIRF is defined as the expectation of volatility conditional on an initial shock and on history, minus the baseline expectation that conditions on history. This makes the process endogenous, but the choice of the baseline shock within the data set makes a difference. We explore the impact of three different shocks, the first marking the onset of the GFC, which we date as 9 August 2007 (GFC1). This began with the seizure in the banking system precipitated by BNP Paribas announcing that it was ceasing activity in three hedge funds that specialised in US mortgage debt. It took a year for the financial crisis to come to a head, but it did so on 15 September 2008, when the US government allowed the investment bank [Lehman Brothers](#) to go bankrupt (GFC2). The third shock is 9 May 2010, which marked the point at which the focus of concern switched from the private sector to the public sector. A further contribution of this paper is the inclusion of leverage, or asymmetric effects. Our modelling is undertaken in the context of a multivariate GARCH model featuring pre-whitened return series, which are then analysed using both BEKK and diagonal BEKK models with the t-distribution. A key result is that the impact of negative shocks is larger, in terms of the effects on variances and covariances, but shorter in duration, in this case a difference between three and six months, in the context of the return series.

**Keywords** Volatility impulse response functions (VIRF), BEKK, DBEKK, Asymmetry, GFC, ESDC.

**JL Classification** C22, C32, C58, G32.

---

## Working Paper nº 1510

July, 2015



UNIVERSIDAD  
COMPLUTENSE

MADRID

ISSN: 2341-2356

WEB DE LA COLECCIÓN: <http://www.ucm.es/fundamentos-analisis-economico2/documentos-de-trabajo-del-icae> Working papers are in draft form and are distributed for discussion. It may not be reproduced without permission of the author/s.

# **Multivariate Volatility Impulse Response Analysis of GFC News Events\***

**David E. Allen**

School of Mathematics and Statistics  
University of Sydney  
and  
School of Business  
University of South Australia

**Michael McAleer**

Department of Quantitative Finance  
National Tsing Hua University, Taiwan  
and  
Econometric Institute  
Erasmus School of Economics  
Erasmus University Rotterdam, The Netherlands  
and  
Tinbergen Institute, The Netherlands  
and  
Department of Quantitative Economics  
Complutense University of Madrid, Spain

**Robert Powell**

School of Business  
Edith Cowan University  
Perth, Australia

**AbhayK. Singh**

School of Business  
Edith Cowan University  
Perth, Australia

July 2015

\* For financial support, the first author wishes to thank the Australian Research Council and the second author wishes to acknowledge the Australian Research Council and the National Science Council, Taiwan. The authors are grateful to Tom Doan and Estima for helpful assistance with RATS coding.

## Abstract

This paper applies the Hafner and Herwartz (2006) (hereafter HH) approach to the analysis of multivariate GARCH models using volatility impulse response analysis. The data set features ten years of daily returns series for the New York Stock Exchange Index and the FTSE 100 index from the London Stock Exchange, from 3 January 2005 to 31 January 2015. This period captures both the Global Financial Crisis (GFC) and the subsequent European Sovereign Debt Crisis (ESDC). The attraction of the HH approach is that it involves a novel application of the concept of impulse response functions, tracing the effects of independent shocks on volatility through time, while avoiding typical orthogonalization and ordering problems. Volatility impulse response functions (VIRF) provide information about the impact of independent shocks on volatility. HH's VIRF extends a framework provided by Koop *et al.* (1996) for the analysis of impulse responses. This approach is novel because it explores the effects of shocks to the conditional variance, as opposed to the conditional mean. HH use the fact that GARCH models can be viewed as being linear in the squares, and that multivariate GARCH models are known to have a VARMA representation with non-Gaussian errors. They use this particular structure to calculate conditional expectations of volatility analytically in their VIRF analysis. A Jordan decomposition of  $\Sigma_t$  is used to obtain independent and identically distributed innovations. A general issue in the approach is the choice of baseline volatilities. VIRF is defined as the expectation of volatility conditional on an initial shock and on history, minus the baseline expectation that conditions on history. This makes the process endogenous, but the choice of the baseline shock within the data set makes a difference. We explore the impact of three different shocks, the first marking the onset of the GFC, which we date as 9 August 2007 (GFC1). This began with the seizure in the banking system precipitated by BNP Paribas announcing that it was ceasing activity in three hedge funds that specialised in US mortgage debt. It took a year for the financial crisis to come to a head, but it did so on 15 September 2008, when the US government allowed the investment bank Lehman Brothers to go bankrupt (GFC2). The third shock is 9 May 2010, which marked the point at which the focus of concern switched from the private sector to the public sector. A further contribution of this paper is the inclusion of leverage, or asymmetric effects. Our modelling is undertaken in the context of a multivariate GARCH model featuring pre-whitened return series, which are then analysed using both BEKK and diagonal BEKK models with the t-distribution. A key result is that the impact of negative shocks is larger, in terms of the effects on variances and covariances, but shorter in duration, in this case a difference between three and six months, in the context of the return series.

**Keywords:** Volatility impulse response functions (VIRF), BEKK, DBEKK, Asymmetry, GFC, ESDC.

**JEL:** C22, C32, C58, G32.

## 1. INTRODUCTION

The similarities between GARCH and VARMA-type models provide a foundation for the approach to generalize impulse response analysis, as introduced by Sims (1980), to the analysis of shocks in financial volatility. Previous alternative approaches in the literature have been made towards tracing the impact of various types of shocks through time (see, for example, Koop *et al.* (1996), Engle and Ng, (1993), Gallant *et al.* (1993), and Lin (1997)). Koop *et al.* (1996) defined generalized impulse response functions for the conditional expectation using the mean of the response vector conditional on history and a current shock, as compared with a baseline that conditions only on historical innovations.

Hafner and Herwartz's (2006) Volatility Impulse Response Functions (VIRFs) extend the generalized impulse response functions framework provided by Koop *et al.* (1996). Their approach is novel in that VIRF explores the conditional variance rather than the conditional mean. Given that GARCH models can be viewed as being linear in the squared innovations, and that multivariate GARCH models are known to have a VARMA representation with non-Gaussian errors, Hafner and Hewartz (2006) adopt this particular structure to calculate conditional expectations of volatility analytically in their VIRF analysis.

In our Generalized VIRF (GVIRF), we consider three major news events which act as shocks to the volatility of our two series. The onset of the GFC, which we date as 9 August 2007 (GFC1), began with the seizure in the banking system precipitated by BNP Paribas announcing that it was ceasing activity in three hedge funds that specialised in US mortgage debt. It took one year for the financial crisis to come to a head, but it did so on 15 September 2008 when the US government allowed the investment bank Lehman Brothers to go bankrupt (GFC2). The date 9 May 2010 marked the point at which the focus of concern switched from the private sector to the public sector. By the time the IMF and the European Union announced they would provide financial help to Greece, the issue was no longer the solvency of banks but the solvency of governments, and this marks the onset of the European Sovereign Debt Crisis (ESDC).

The remainder of the paper is as follows. In Section 2 the research methods and data are discussed, including volatility impulse response functions, multivariate GARCH models, the regularity conditions for BEKK and diagonal BEKK (DBEKK) models, the triangular, Hadamard and full

BEKK models, and diagonal and scalar BEKK models. The empirical results are discussed in Section 3, and some concluding remarks are given in Section 4.

## 2. RESEARCH METHODS AND DATA

Hafner and Herwartz (2006) develop their model by letting  $\varepsilon_t$  denote an  $N$ -dimensional random vector, so that:

$$\varepsilon_t = P_t \xi_t, \quad (1)$$

where  $P_t P_t' = \sum_t$  and  $\xi_t$  denotes an *iid* random vector of dimension  $N$ , with independent components, mean zero and identity covariance matrix. Hafner and Herwartz assume that  $\sum_t$  is measurable with respect to the information set available at time  $t-1$ ,  $F_{t-1}$ . Equation (1) implies that  $E[\varepsilon_t | F_{t-1}] = 0$ , and  $Var[\varepsilon_t | F_{t-1}] = \sum_t$ . They note that  $\varepsilon_t$  could be the error of a VARMA process. If  $\varepsilon_t$  is a multivariate GARCH process, then equation (1) may be called a strong GARCH model, according to Drost and Nijman (1993). This is convenient because it permits the modelling of news events as appearing in the *iid* innovation,  $\xi_t$ . They identify  $\xi_t$  by assuming that  $P_t$  is a lower triangular matrix, which permits the use of a Choleski decomposition of  $\sum_t$ . They also use the fact that independent news can often be identified by means of a Jordan decomposition, which will permit identification when the innovation vector is non-normal.

Hafner and Herwartz adopt a multivariate GARCH( $p, q$ ) model framework, given by:

$$vech(\sum_t) = c + \sum_{i=1}^q A_i vech(\varepsilon_{t-i} \varepsilon_{t-i}') + \sum_{j=1}^p B_j vech(\sum_{t-i}), \quad (2)$$

and use the BEKK model of Baba *et al.* (1985) and Engle and Kroner (1995), which is a special case of equation (2), and is specified as:

$$\sum_t = C_0 C_0' + \sum_{k=1}^K \sum_{i=1}^q A_{ki}' \varepsilon_{t-i} \varepsilon_{t-i}' A_{ki} + \sum_{k=1}^K \sum_{i=1}^p G_{ki}' \sum_{t-i} G_{ki}. \quad (3)$$

In equation (3),  $C_0$  is a lower triangular matrix, and  $A_{ki}$  and  $G_{ki}$  are  $N \times N$  parameter matrices.

## 2.1 Volatility Impulse Response Functions

Hafner and Herwartz (2006) proceed by assuming that, at time  $t$ , some independent news is reflected in  $\xi_0$ , and it is not specified whether the news is good or bad. The conditional covariance matrix,  $\Sigma_t$ , is a function of the innovations,  $\xi_1, \dots, \xi_{t-1}$ , the original shock,  $\xi_0$ , and  $\Sigma_0$ . Hafner and Herwartz define VIRF as the expectation of volatility conditional on an initial shock and on history, minus the baseline expectation that only conditions on history, as given in the following:

$$V_t(\xi_0) = E[\text{vech}(\Sigma_t) | \xi_0, F_{-1}] - E[\text{vech}(\Sigma_t) | F_{-1}] \quad (4)$$

In equation (4),  $V_t(\xi_0)$  is an  $N^*$ -dimensional vector.

Hafner and Herwartz consider a VARMA representation of a multivariate GARCH( $p, q$ ) model in order to find an explicit expression for  $V_t(\xi_0)$ , and define  $\eta_t = \text{vech}(\varepsilon_t \varepsilon_t')$ . They define the multivariate GARCH( $p, q$ ) model as a VARMA( $\max(p, q), p$ ) model:

$$\eta_t = \omega + \sum_{i=1}^{\max(p, q)} (A_i + B_i) \eta_{t-i} - \sum_{j=1}^p B_j u_{t-j} + u_t, \quad (5)$$

where  $u_t = \eta_t - \text{vech}(\Sigma_t)$  is a white noise vector. From equation (5), Hafner and Herwartz derive the

VMA( $\infty$ ) specification, as follows:

$$\eta_t = \text{vech}(\Sigma_t) + \sum_{i=0}^{\infty} \phi_i u_{t-i}, \quad (6)$$

where the  $N^* \times N^*$  matrices  $\phi_i$  can be determined recursively. The general expression for VIRF is:

$$V_t(\xi_0) = \phi_t D_N^+ \left( \sum_0^{1/2} \otimes \sum_0^{1/2} \right) D_N \text{vech}(\xi_0 \xi_0' - I_N). \quad (7)$$

Hafner and Herwartz (2006) consider a variety of specifications for the baseline shock. The behaviour implied by equation (7) is different from traditional impulse response analysis. In (7), the impulse is an even, not odd, function of the shock, it is not linear in the shock, and the VIRF depends on the history of the process, although this is via the volatility state at the time the shock occurs. The decay or persistence is given by the moving average matrices,  $\phi_t$ , which is similar to traditional impulse response analysis.

Further complications arise from the choice of baseline because no natural baseline exists for  $\varepsilon_0^0$  in VIRF, as any given baseline deviates from the average volatility state. For example, a zero baseline would represent the lowest volatility state and volatility forecasts would increase from this baseline. After discussing various alternatives, Hafner and Herwartz (2006) adopt the definition given in equation (4). In their original analysis of exchange rates, Hafner and Herwartz examine the impact of particular historical shocks that occur in their sample, as well as considering random shocks for their estimated model.

In an empirical analysis of US and UK indices, we consider the onset of the GFC, which we date as 9 August 2007 (GFC1), then the date when the financial crisis came to a head, 15 September 2008, when the US government allowed the investment bank Lehman Brothers to go bankrupt (GFC2). The date 9 May 2010 marked the point at which the focus of concern switched from the private sector to the public sector, and this marks the onset of the European Sovereign Debt Crisis (ESDC). We also consider random shocks in the empirical analysis.

## 2.2 Multivariate GARCH Models

The analysis in the paper features applications of both the BEKK and Diagonal BEKK (DBEKK) models. The BEKK model was introduced by Baba *et al.* (1985) and Engle and Kroner (1995). In the case of a model with single lags, the BEKK recursion is:

$$H_t = CC' + A'u_{t-1}u_{t-1}'A + B'H_{t-1}B, \quad (8)$$

where  $H$  is a matrix of the covariances, and  $C$ ,  $A$  and  $B$  are the coefficient matrices. The expression above is written in *vech* format to generate the VIRFs, as shown below:

$$\text{vec}(H_t) = \text{vec}(CC') + (A' \otimes A')\text{vec}(u_{t-1}u_{t-1}') + (B' \otimes B')\text{vec}(H_{t-1}). \quad (9)$$

However, a drawback of using the BEKK model is that there are no regularity conditions or statistical properties for full BEKK, as discussed in the next subsection. Chang *et al.* (2015) discuss stochastic processes for univariate and multivariate conditional volatility models, and the following subsections 2.3-2.5 draw closely on their analysis.

### 2.3 Regularity Conditions for BEKK and DBEKK

The original multivariate extension of univariate GARCH is given in Baba *et al.* (1985) and Engle and Kroner (1995), while a consideration of leverage effects and the multivariate extension of univariate GJR is given in McAleer *et al.* (2009). The asymmetry conditions for multivariate GJR are given in the VARMA-AGARCH model of McAleer *et al.* (2009). Leverage has typically been presented for individual equations only, as defined by Black (1976) for univariate processes using arguments based on the debt-to-equity ratio.

In order to establish volatility spillovers in a multivariate framework, it is useful to define the multivariate extension of the relationship between the returns shocks and the standardized residuals, that is:

$$\eta_t = \varepsilon_t / \sqrt{h_t},$$

where  $h_t$  denotes univariate conditional volatility. A multivariate extension of an equation for the conditional mean of financial returns can be written as:

$$y_t = E(y_t | I_{t-1}) + \varepsilon_t,$$

if it is assumed that the three components are  $m \times 1$  vectors, where  $m$  is the number of financial assets. The multivariate definition of the relationship between  $\varepsilon_t$  and  $\eta_t$  is given as:

$$\varepsilon_t = D_t^{1/2} \eta_t, \quad (10)$$

where  $D_t = \text{diag}(h_{1t}, h_{2t}, \dots, h_{mt})$  is a diagonal matrix comprising the univariate conditional volatilities. Define the conditional covariance matrix of  $\varepsilon_t$  as  $Q_t$ . As the  $m \times 1$  vector,  $\eta_t$ , is assumed to be *iid* for all  $m$  elements, the conditional correlation matrix of  $\eta_t$ , which is equivalent to the conditional correlation matrix of  $\varepsilon_t$ , is given by  $\Gamma_t$ . Therefore, the conditional expectation of (10) is defined as:

$$Q_t = D_t^{1/2} \Gamma_t D_t^{1/2}. \quad (11)$$

Equivalently, the conditional correlation matrix,  $\Gamma_t$ , can be defined as:

$$\Gamma_t = D_t^{-1/2} Q_t D_t^{-1/2}. \quad (12)$$

Equation (11) is useful if a model of  $\Gamma_t$  is available for purposes of estimating  $Q_t$ , whereas equation (12) is useful if a model of  $Q_t$  is available for purposes of estimating  $\Gamma_t$ .

Both equations (11) and (12) are instructive for a discussion of asymptotic properties. As the elements of  $D_t$  are consistent and asymptotically normal, the consistency of  $Q_t$  in equation (11) depends on consistent estimation of  $\Gamma_t$ , whereas the consistency of  $\Gamma_t$  in equation (12) depends on consistent estimation of  $Q_t$ . As both  $Q_t$  and  $\Gamma_t$  are products of matrices, neither the QMLE of  $Q_t$  or  $\Gamma_t$  will be asymptotically normal based on the definitions given in equations (11) and (12).

#### 2.4 Triangular, Hadamard and Full BEKK

Without actually deriving the model from an appropriate stochastic process, Baba *et al.* (1985) and Engle and Kroner (1995) considered the full BEKK model, as well as the special cases of triangular and Hadamard (element-by-element multiplication) BEKK models. The specification of the multivariate model is the same as the specification in equation (8), namely:

$$H_t = CC' + A'u_{t-1}u_{t-1}'A + B'H_{t-1}B, \quad (13)$$

except that  $A$  and  $B$  are full, Hadamard or triangular matrices.

Although estimation of the full, Hadamard and triangular BEKK models is available in some standard econometric and statistical software packages, it is not clear how the likelihood functions might be determined. Moreover, the so-called “curse of dimensionality”, whereby the number of parameters to be estimated is excessively large, makes convergence of any estimation algorithm somewhat problematic.

Jeantheau (1998) showed that the QMLE of the parameters of the full BEKK model is consistent under a multivariate log-moment condition, while Comte and Lieberman (2003) showed that the QMLE are asymptotically normal under the assumption of the existence of eighth moments. Specifically, the multivariate log-moment conditions are difficult to verify when the matrices  $A$  and  $B$  are neither diagonal nor scalar matrices, and the eighth moment condition cannot be verified for a full BEKK model. Therefore, there are as yet no verifiable asymptotic properties of the full, Hadamard or triangular BEKK models.

## 2.5 Diagonal and Scalar BEKK

Consider a vector random coefficient autoregressive process of order one:

$$\varepsilon_t = \Phi_t \varepsilon_{t-1} + \eta_t \quad (14)$$

where

$\varepsilon_t$  and  $\eta_t$  are  $m \times 1$  vectors, and  $\Phi_t$  is an  $m \times m$  matrix of random coefficients, and

$$\Phi_t \sim iid(0, A),$$

$$\eta_t \sim iid(0, QQ').$$

Technically, a vectorization of a full (that is, non-diagonal or non-scalar) matrix  $A$  to  $vec A$  can have dimension as high as  $m^2 \times m^2$ , whereas the half-vectorization of a symmetric matrix  $A$  to  $vech A$  can have dimension as low as  $m(m+1)/2 \times m(m+1)/2$ .

In a case where  $A$  is either a diagonal matrix or the special case of a scalar matrix,  $A = aI_m$ , McAleer *et al.* (2008) showed that the multivariate extension of GARCH(1,1) from equation (14), incorporating an infinite geometric lag in terms of the returns shocks, is given as the diagonal BEKK (DBEKK) or scalar BEKK model, namely:

$$Q_t = QQ' + A\varepsilon_{t-1}\varepsilon_{t-1}'A' + BQ_{t-1}B', \quad (15)$$

where  $A$  and  $B$  are both either diagonal or scalar matrices.

McAleer *et al.* (2008) showed that the QMLE of the parameters of the diagonal or scalar BEKK models were consistent and asymptotically normal, so that standard statistical inference on testing hypotheses is valid. Moreover, as  $Q_t$  in equation (15) can be estimated consistently,  $\Gamma_t$  in equation (12) can also be estimated consistently.

Given the above considerations, we present the results of both full BEKK and DBEKK in the empirical analysis that follows. We can be confident about the statistical properties of DBEKK when it is used to calculate VIRFs, and the important consideration is whether the two methods and their associated VIRFs, have the same implications for our results. If they point to the same conclusions, we can have more confidence in the results.

### 3. EMPIRICAL RESULTS

Summary statistics for the two index return series for the period 3 January 2005 to 31 December 2014, giving a total of 2608 valid observations, are shown in Table 1. Both the NYSE and the FTSE return series display excess kurtosis and are negatively skewed. The time series plots of the index values are shown in Figure 1.

Table 2 provides tests of skewness, kurtosis and whether the return series for the two index series are normally distributed. The Jarque-Bera (JB) test rejects normality at any standard level of significance. For this reason, the Student t distribution is used in the subsequent analysis. We filter the return series through an AR(1) process before proceeding to use the subsequent residuals in a multivariate BEKK analysis to generate the VIRF, as in Hafner and Herwartz (2006).

Table 3 shows the results of the application of the filters, and Table 4 gives the diagnostics for the residuals. The application of the AR(1) model appears to whiten the residuals, and the Ljung-Box Q statistics for serial correlation suggest that correlation is not a problem. The Jarque-Bera (JB) test strongly rejects normality for the shocks, so we conduct the subsequent analysis using the t-distribution.

### 3.1 Results from BEKK analysis

Table 4 shows the results of the application of the BEKK model. We can forecast the volatility and correlations for the two series using the BEKK model. We forecast for 100 days at the end of the time series and use a window of 400 daily observations to fit the model. The results are shown in Figure 2. The recent experience of relatively high volatilities cause the increase in the two forecast volatilities, while the correlation tends towards the mean over the sub-sample.

Plots of the VIRFs are shown in Figure 3, Panels A and B. The VIRF impulse responses for 9 August 2007, as shown in Panel A, use the variance at that point in time as the baseline. The initial response for the NYSE is scaled at just under 10000. When this is compared to the impulse response of the FTSE in the UK, the response is even larger at just over 10000. These have been computed using a baseline of the estimated volatility state, so they are excess over the predicted covariance. They can be contrasted with the impact of the EU debt crisis on 5 May 2010, in which the NYSE initial response is just over 1500, while the FTSE response at the same point in time is nearly 2000, suggesting that, as might be expected, the EU debt crisis had a larger impact in London than it had in New York.

These shocks have been predicted using a baseline of zero. The 2007 shocks take a period of about 6 months to work through, while the 2010 shocks take a longer period of 8-9 months, but this may well reflect the choice of a lower baseline. The covariances show a dramatic spike in response to both

shocks but remain higher for longer, in relation to the 2010 shock, possibly in response to the choice of baseline, as mentioned above. Thus, the choice of baseline remains a key issue in the implementation of VIRF analysis.

Panel B of Figure 3 contrasts the 15 September 2008 GFC impact with the 5 May 2010 EU debt crisis once again, and the choice of baselines mirrors that in Panel A. The impact of the shock in 2008, at the height of the GFC, is relatively higher than previously, in both New York and London. On the NYSE it approaches 25000, while on the FTSE it is even higher, approaching 40000, and the shocks in both markets take longer to die out than they did in 2007, taking 9 months to return to equilibrium. The covariance approaches 20000 and remains at high levels for 6-7 months. The 5 May 2010 graphs are the same as in Panel A, and are included for the purpose of a direct comparison.

Given that we are considering VIRF in the context of stock market indices, it seems appropriate to consider asymmetry effects via the introduction of the separate consideration of the impact of negative shocks. The estimates of the BEKK and asymmetric BEKK-t models are shown in Tables 5 and 7, and the eigenvalues from BEKK-t and asymmetric BEKK-t are given in Tables 6 and 9, respectively (for the sake of brevity, only the multivariate GARCH and asymmetric terms are reported in the tables). The analysis is broadly similar as described above.

Figure 4 shows the VIRF (for the sake of brevity only September 2008 and May 2010 are considered). The key difference in the results, when compared to the previous analysis, is that the VIRFs are larger and of shorter duration. For example, the NYSE variance increases to 8000 and the FTSE variance increases to 15,000 in September 2008. The duration of the response for both 2008 and 2010 is reduced to 3 months for both the variances and covariances.

However, in Section 2.3 in this paper noted that we can be confident about the statistical properties of DBEKK when it is used to calculate VIRFs, which is not the case for full BEKK. The key finding is whether the two methods and their associated VIRFs have the same implications for the empirical results. If the empirical results lead to the same conclusions, we can have greater confidence in the empirical results. In Section 3.2 we present the empirical results and VIRFs from a diagonal BEKK (DBEKK) analysis.

### 3.2 Results from DBEKK

The DBEKK model has valid statistical properties and regularity conditions, so we can be confident in the empirical results. It has to be borne in mind that DBEKK has fewer parameters, so its VIRFs are simpler than are those for full BEKK. We estimate DBEKK using the same procedure as discussed previously, and use a t-distribution and include asymmetry.

The asymmetric DBEKK model estimated using a t-distribution (DBEKK-t) is much better behaved, as can be seen in Table 8. All the coefficients apart from one that are shown in Table 5 are significant. The eigenvalues shown in Table 9 are stable, given that all are less than one.

Figure 5 shows the impulse responses generated by the asymmetric DBEKK model estimated using a t distribution (DBEKK-t). The results in Panel A reflect the fact that the 9 August 2007 VIRF has a baseline calculated on the shock at that point in time, while the 15 September 2008 shock has a baseline of zero. The results are consistent with the previous BEKK estimates in that the asymmetric DBEKK model produces negative shocks that last for only 3 months in duration. The 2008 shocks again are larger in LFTSERET than on NYSERET.

Panel B in Figure 5 is constructed in a similar manner. The 9 August 2007 VIRF is calculated on the shock at that point in time, while the 15 September 2008 shock is calculated using a zero baseline. Consistent with the previous results, the shocks have a three-month duration, and their relative sizes are the same as previously calculated, revealing that both the BEKK and DBEKK results are entirely consistent.

In order to complete the analysis, we also calculate a DBEKK model without asymmetries and present the results in Tables 10-11 and in Figure 6. All the coefficients for the DBEKK model, without asymmetries, as shown in Table 10, are highly significant. The eigenvalues, as shown in Table 11, are closer to one than for the DBEKK model with asymmetries, as reported in Table 6, suggesting that the standard BEKK model is less stable.

In Figure 6, for purposes of comparison, we depict the VIRFs for the GFC2 period and the Euro debt crisis. The VIRFs in Figure 6 are consistent with the previous analysis using the full BEKK model without asymmetries. The impact of the 2008 shock is larger in London than in New York, using the

shock at that point in time as a baseline. A similar pattern is observed in the 2010 Euro-debt shock. Once again, we observe, ignoring the asymmetries, the duration of the shock is much longer, and now extends to eighteen months in all figures before equilibrium is re-established. This is more than double the durations of the VIRFs recorded for the full BEKK model without asymmetries, but the relative durations remain consistent.

#### **4. CONCLUSION**

In this paper we have applied the Hafner and Herwartz (2006) Volatility Impulse Response Function (VIRF) analysis to ten years of daily return series from the New York Stock Exchange Index, and the London Stock Exchange FTSE 100 index, for the period 3 January 2005 to 31 January 2015. An attractive feature of VIRF analysis of the effects of shocks on volatility through time is that the shocks are treated as endogenous.

However, we also note that the choice of the baseline for the shock makes a considerable difference. A useful contribution of this paper is to consider asymmetric effects, which are well documented in the empirical analysis of stock markets (see, for example, Engle and Ng (1993)). We showed that the impacts of negative shocks are larger, but of shorter duration, than those implied by a symmetric treatment of shocks.

Our empirical analysis is based on application of the full BEKK model, for which no verifiable asymptotic properties exist, as well as the diagonal BEKK (DBEKK) model, which is not so constrained. The empirical results are consistent and suggest that the inclusion of asymmetries is important when VIRF analysis is applied to stock market data. It was found that the responses to negative shocks are deeper and of shorter duration than the responses to positive shocks. The empirical results of both the BEKK and DBEKK models are strongly consistent with each other.

## REFERENCES

- Baba, Y., R.F. Engle, D. Kraft and K.F. Kroner (1985), Multivariate simultaneous generalized ARCH, Unpublished manuscript, Department of Economics, University of California, San Diego, CA, USA.
- Black, F. (1976), Studies of stock market volatility changes, in Proceedings of the American Statistical Association, Business and Economic Statistics Section, Washington, DC, USA, 1976, pp. 177-181.
- Chang, C.-L. Y.-Y. Li and M. McAleer (2015), Volatility spillovers between energy and agricultural markets: A critical appraisal of theory and practice, Econometric Institute Research Paper EI2015-18, Erasmus School of Economics, Erasmus University Rotterdam.
- Comte, F. and O. Lieberman (2003), Asymptotic theory for multivariate GARCH processes, *Journal of Multivariate Analysis*, 84, 61-84.
- Engle, R.F. and V.K. Ng (1993), Measuring and testing the impact of news on volatility, *Journal of Finance*, 48, 1749-1778
- Engle, R.F. and K.F. Kroner (1995), Multivariate simultaneous generalized ARCH, *Econometric Theory*, 11, 122-150.
- Drost, F. and T. Nijman (1993), Temporal aggregation of GARCH processes, *Econometrica*, 61, 909-927.
- Gallant, A.R., P.E. Rossi and G. Tauchen (1993), Nonlinear dynamic structures, *Econometrica*, 61, 871-907.
- Hafner, C.M. and H. Herwartz (2006), Volatility impulse responses for multivariate GARCH models: An exchange rate illustration, *Journal of International Money and Finance*, 25, 719-740.
- Jeantheau, T. (1998), Strong consistency of estimators for multivariate ARCH models, *Econometric Theory*, 14, 70-86.
- Koop, G., M.H. Pesaran and S.M. Potter (1996). Impulse response analysis in nonlinear multivariate models. *Journal of Econometrics*, 74, 119-147.
- Lin, W.-L. (1997), Impulse response function for conditional volatility in GARCH models, *Journal of Business & Economic Statistics*, 15, 15-25.
- McAleer, M., S. Hoti and F. Chan (2009), Structure and asymptotic theory for multivariate asymmetric conditional volatility, *Econometric Reviews*, 28, 422-440.
- Sims, C. (1980), Macroeconomics and reality, *Econometrica* 48, 1-48.

Tauchen, G., H. Zhang, and M. Liu (1996), Volume, volatility and leverage: A dynamic analysis, *Journal of Econometrics*, 74, 177-208.

<b>Table 1</b>			
<b>Summary Statistics for 2005-01-03 - 2014-12-31 (2608 valid observations)</b>			
<b>NYSERET (2608 valid observations)</b>			
Mean	Median	Minimum	Maximum
0.000154204	0.000431926	-0.102321	0.115258
Std. Dev.	C.V.	Skewness	Ex. kurtosis
0.0133989	86.8909	-0.417694	10.8634
5% Perc.	95% Perc.	IQ range	Missing obs.
-0.0202854	0.0179030	0.0103402	0
<b>Summary Statistics for 2005-01-03 - 2014-12-31 (2608 valid observations)</b>			
<b>FTSERET</b>			
Mean	Median	Minimum	Maximum
3.92100e-005	0.000475224	-0.105381	0.122189
Std. Dev.	C.V.	Skewness	Ex. kurtosis
0.0148037	377.549	-0.110113	9.87695
5% Perc.	95% Perc.	IQ range	Missing obs.
-0.0227705	0.0205110	0.0132403	0

**Table 2**  
**Tests of Skewness, Excess Kurtosis, and Normality**

<b>NYSERET(*100)</b>		
Skewness	-0.417934	Signif Level (Sk=0) 0
Kurtosis (excess)	10.886570	Signif Level (Ku=0) 0
Jarque-Bera	12954.814995	Signif Level (JB=0) 0
<b>FTSERET(*100)</b>		
Skewness	-0.110176	Signif Level (Sk=0) 0.021693
Kurtosis (excess)	9.898215	Signif Level (Ku=0) 0
Jarque-Bera	10651.855632	Signif Level (JB=0) 0

**Table 3**  
**AR(1) and preliminary GARCH(1,1) analysis of return series**

<b>NYSE</b>			
<b>Variables</b>	<b>Coefficient</b>	<b>t-statistic</b>	<b>Significance</b>
Constant	0.054269041	3.39885	0
LNYSERET(1)	-0.050346740	-2.49472	0.013
<b>GARCH(1,1)</b>			
C	0.016988318	2.95313	0.003
A	0.093671095	6.40479	0
B	0.893694731	61.55474	0
<b>FTSE</b>			
Constant	4.7248e-004	2.35012	0.019
LFTSERET(1)	-0.0463	-2.27302	0.023
C	1.7113e-006	2.90809	0
A	0.0911	5.66440	0
B	0.9013	52.15142	0

**Table 4**  
**Residual diagnostics**

<b>ARCH-LM(1)</b>	<b>JB</b>	<b>Q(10)</b>	<b>Q(20)</b>
<b>LNYSERET</b>			
8.476 (0.004)	472.482 (0.000)	9.000 (0.437)	23.055(0.235)
<b>LFTSERET</b>			
0.002 (0.967)	197.09 (0.000)	5.125 (0.823)	17.914(0.528)

**Table 5**  
**BEKK**

Variable	Coefficient	Standard Error	t-statistic	Significance
Constant	0.094673045	0.015120103	6.26140	0
LNYSERET{1}	-0.252211378	0.018119393	-13.91942	0
Constant	0.077323881	0.019894664	3.88666	0
LFTSERET{1}	-0.168032092	0.016587251	-10.13020	0
C(1,1)	-0.097175963	0.044805916	-2.16882	0.03
C(2,1)	-0.264611585	0.034032404	-7.77528	0
C(2,2)	-0.000000180	0.149309283	-1.20715e-006	0.999
A(1,1)	0.021678144	0.041879070	0.51764	0.605
A(1,2)	-0.383455482	0.052098541	-7.36020	0
A(2,1)	-0.222393062	0.035195693	-6.31876	0
A(2,2)	-0.063023626	0.046314167	-1.36079	0.173
B(1,1)	1.202152703	0.015121227	79.50100	0
B(1,2)	0.450960714	0.027752985	16.24909	0
B(2,1)	-0.354541888	0.021500835	-16.48968	0
B(2,2)	0.591348452	0.024731239	23.91099	0
Shape	7.670707369	0.748939459	10.24209	0

**Table 6**  
**Eigenvalues from BEKK-t**

0.98025	0	0.72696	-0.46101	0.72696	0.46101
Var	JB	p-value			
1	147.280	0			
2	69.556	0			
All	216.836	0			

**Table 7**  
**Asymmetric BEKK-t**

<b>Variable</b>	<b>Coefficient</b>	<b>Standard Error</b>	<b>t-statistic</b>	<b>Significance</b>
A(1,1)	-0.022753722	0.060798967	-0.37425	0.708
A(1,2)	-0.405700847	0.065933722	-6.15316	0
A(2,1)	0.148631275	0.035519302	4.18452	0
A(2,2)	0.296233075	0.041308360	7.17126	0
B(1,1)	0.812855262	0.026787787	30.34425	0
B(1,2)	-0.151242974	0.031493570	-4.80234	0
B(2,1)	0.161414758	0.030535132	5.28620	0
B(2,2)	0.997063705	0.025611106	38.93091	0
D(1,1)	-0.469369500	0.036937131	-12.70725	0
D(1,2)	-0.393521072	0.089578341	-4.39304	0
D(2,1)	0.211373660	0.061407304	3.44216	0
D(2,2)	-0.083147397	0.085927903	-0.96764	0.333
Shape	8.904691765	0.951329821	9.36026	0

**Table 8**  
**Asymmetric DBEKK-t**

Variable	Coefficient	Standard Error	t-statistic	Significance
Mean Model LNYSERET				
Constant	0.072214891	0.016514826	4.37273	0
LNYSERET(1)	-0.246671385	0.017309242	-14.25085	0
Mean Model LFTSERET				
Constant	0.051226153	0.019264661	2.65907	0.008
LFTSERET(1)	-0.129102063	0.016647036	-7.75526	0
C(1,1)	0.122517499	0.012861431	9.52596	0
C(2,1)	0.110032035	0.015744065	6.98879	0
C(2,2)	0.088019683	0.012074757	7.28956	0
A(1)	-0.024217524	0.033245856	-0.72844	0.466
A(2)	-0.150597648	0.029857611	-5.04386	0
B(1)	0.959878240	0.004026069	238.41572	0
B(2)	0.959775221	0.005034805	190.62807	0
D(1)	0.338891628	0.018669042	18.15260	0
D(2)	0.283093998	0.025964433	10.90315	0
Shape	7.623084667	0.738881477	10.31706	0

**Table 9**  
**Eigenvalues from Asymmetric BEKK-t**

0.94383, 0	0.92489, 0	0.92193, 0
<b>Var</b>	<b>JB</b>	<b>p-value</b>
1	153.216	0
2	224.941	0
All	378.157	0

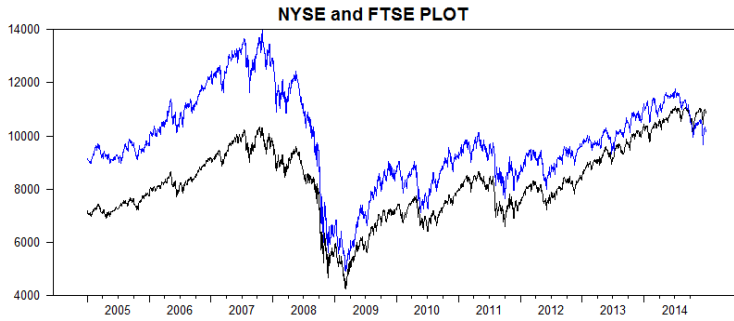
**Table 10**  
**DBEKK-t without Asymmetries**

Variable	Coefficient	Standard Error	t-statistic	Significance
Mean Model LNYSERET				
Constant	0.090305522	0.015901813	5.67895	0
LNYSERET(1)	-0.251500344	0.017757663	-14.16292	0
Mean Model LFTSERET				
Constant	0.064511941	0.019540751	3.30141	0.001
LFTSERET(1)	-0.138112219	0.016239859	-8.50452	0
C(1,1)	0.120332752	0.014853367	8.10138	0
C(2,1)	0.079599176	0.013060471	6.09466	0
C(2,2)	0.092005900	0.013195478	6.97253	0
A(1)	0.281404331	0.016505582	17.04904	0
A(2)	0.243537494	0.016343016	14.90162	0
B(1)	0.954923410	0.005051244	189.04719	0
B(2)	0.966108091	0.004134165	233.68881	0
Shape	6.754575562	0.611797521	11.04054	0

**Table 11**  
**Eigenvalues from BEKK-t**

0.99268, 0	0.99109, 0	0.99107, 0
<b>Var</b>	<b>JB</b>	<b>p-value</b>
1	159.968	0
2	240.138	0
All	400.106	0

**Figure 1**



Note: NYSE - Blue, FTSE – Black.

**Figure 2**

**100 day forecasts based on BEKK**

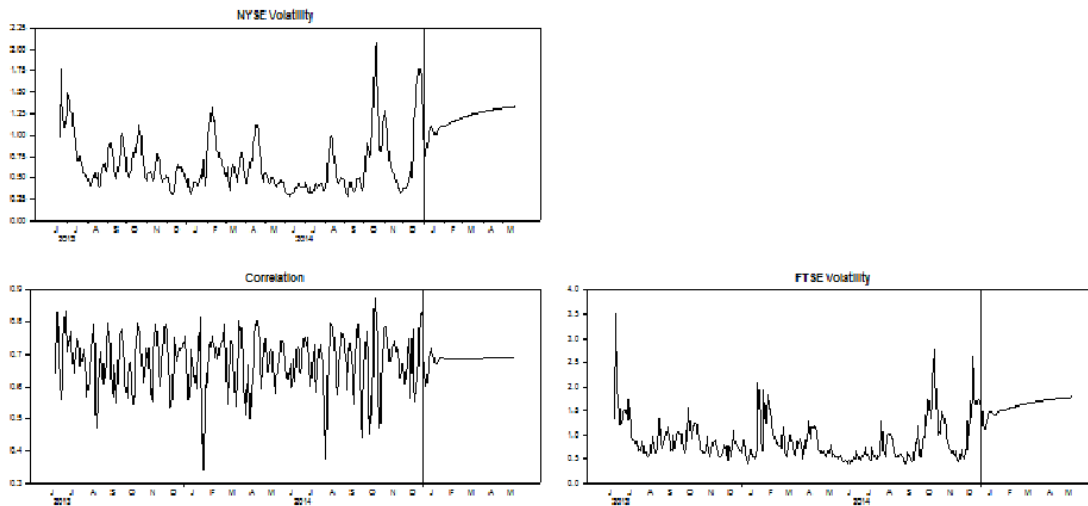
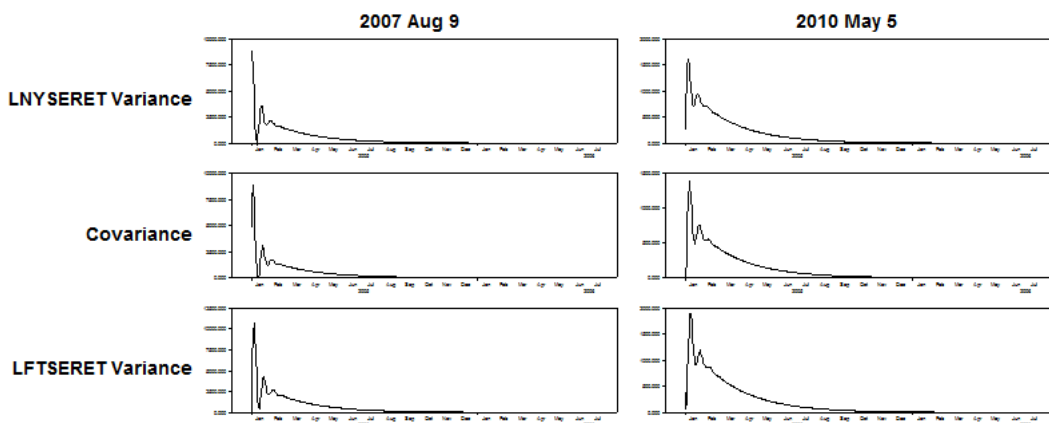


Figure 3

**VIRF Panel A: Baselines 9 August 2007 and 5 May 2010**



**VIRF Panel B: Baselines 15 September 2008 and 5 May 2010**

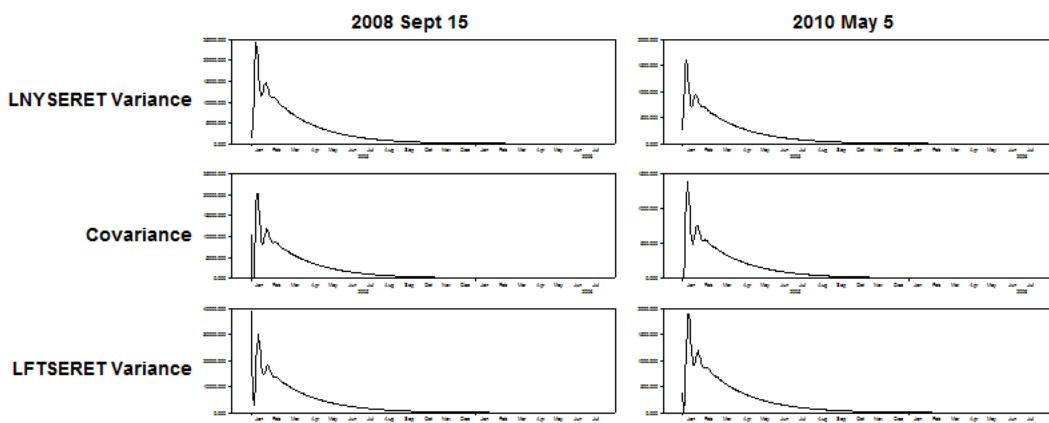
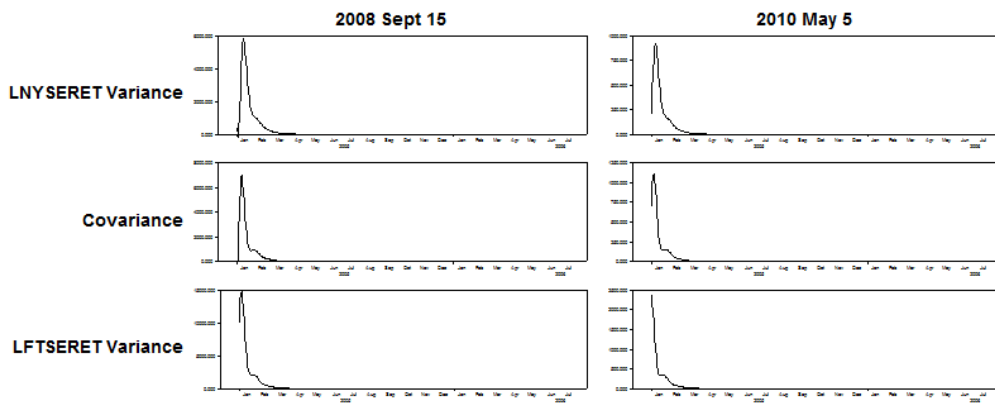


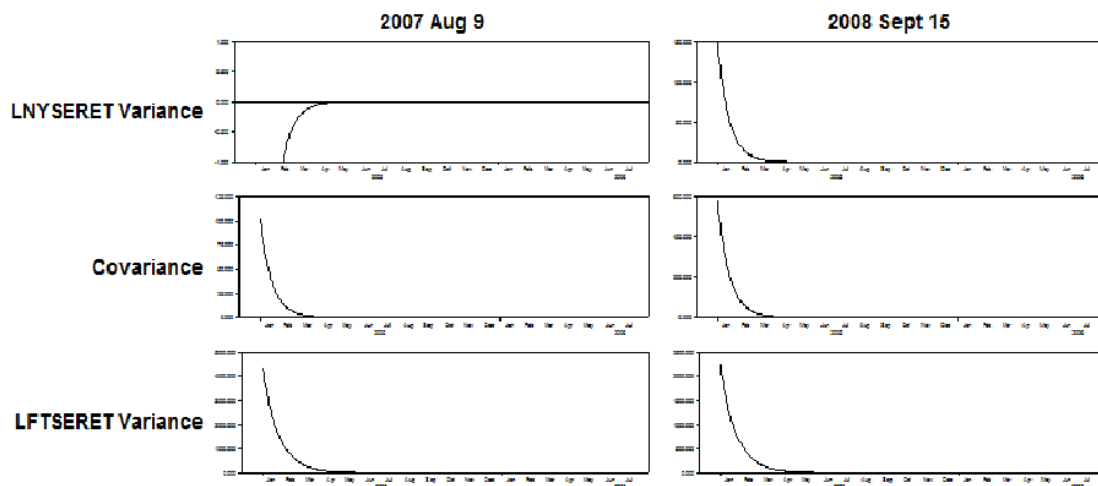
Figure 4

VIRF Asymmetric BEKK (responses to negative price movements)



**Figure 5**  
**VIRF Asymmetric DBEKK-t**

**Panel A**



**Panel B**

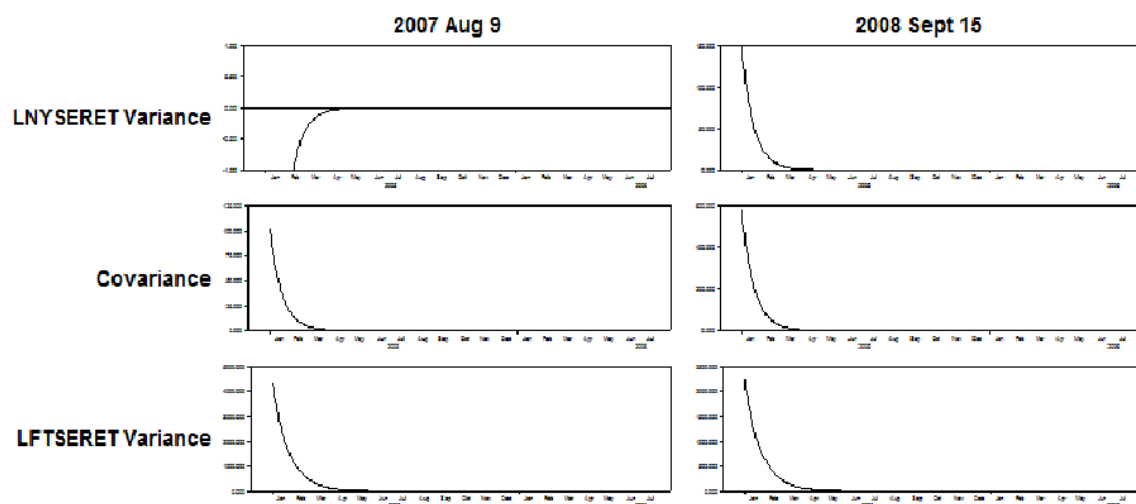


Figure 6

VIRF for GFC2 and Euro Debt crisis using DBEKK-t

