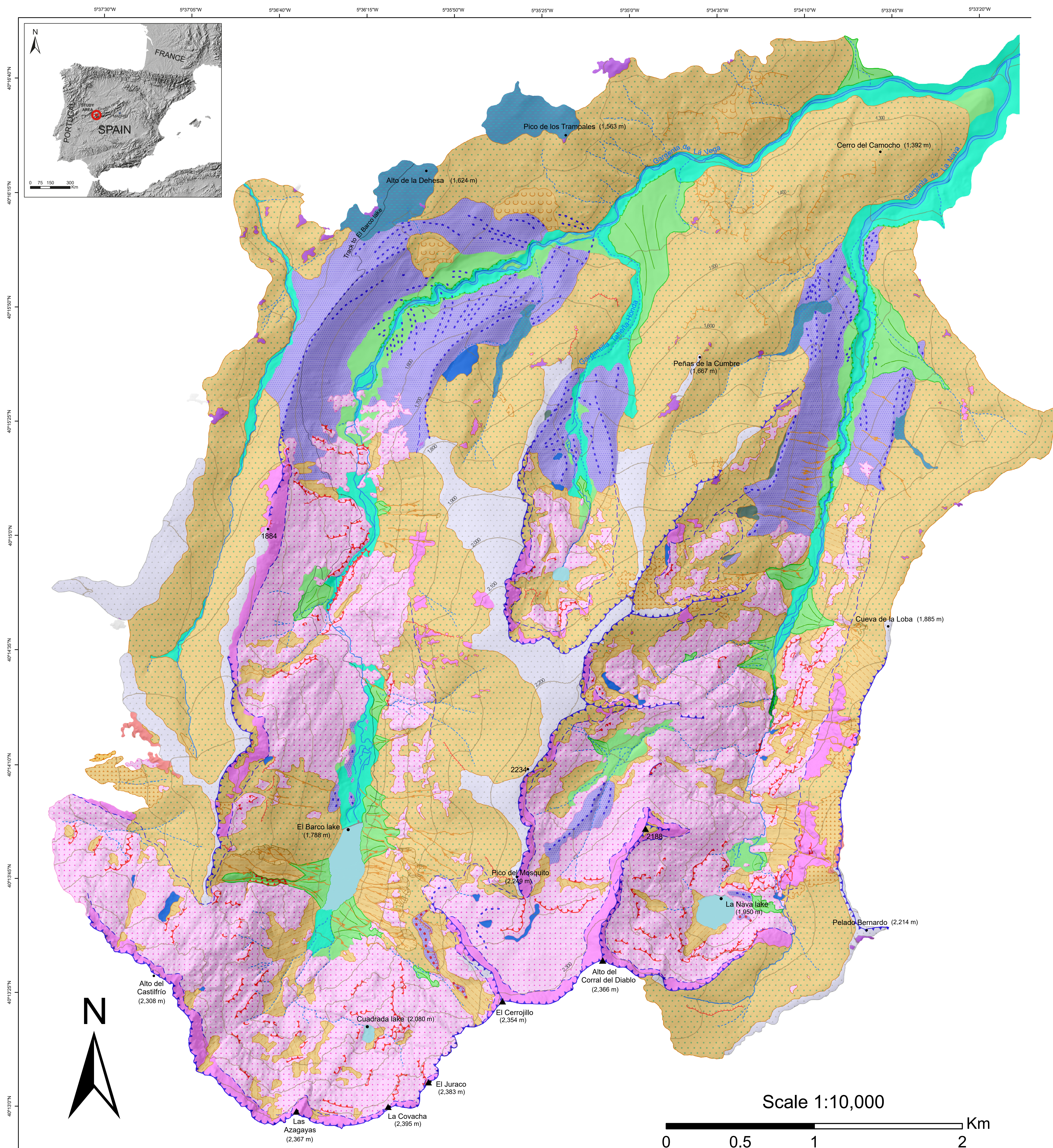


Geomorphology of glaciated gorges in a granitic massif (Gredos range, Central Spain)

Néstor Campos, Luis Miguel Tanarro and David Palacios

Research Group of High Mountain Physical Geography,
Complutense University of Madrid, 28040 Madrid, Spain



Legend

Structural Landforms

- rock scarp
- rock step

Gravitative Landforms

- scar
 - debris channel
 - debris header
 - landslide
 - boulder accumulation
 - vegetation-covered talus slope
 - talus slope*
- * the pattern indicates de direction of the slope

Weathering Landforms

- talus weathered mantle
- summit weathered mantle
- tors

Glacial Landforms

- glacial cirque, glacial trough edge
- trimline
- roches moutonnées
- morainic crest
- moraine accumulation
- horn

Periglacial Landforms

- periglacial deposit area
- castellated rocks

Anthropic Landforms

- concrete dyke
- structure
- track

Fluvial Landforms

- postglacial fluvial incision
- gorge engagement
- erosion or terrace edge
- glacio-fluvial plain
- alluvial fan
- inactive alluvial fan
- river bed

Nival Landforms

- furrow
- protalus rampart

Lacustrine Landforms

- slope-narrow plain endorsed by lateral moraine
- peatland
- alluvial plain sealed by lateral moraine
- flat lacustrine surface

Hydrography

- stream
- intermittent stream
- lake
- river

Base Map: ITACYL 1:10,000
Contour interval: 100 meters
Projected Coordinate System: ETRS89 Zone 30N
Mapped from aerial photographs, satellite
and 3D images provided by IGN.
All elevations are in meters above sea level.
© Journal of Maps, 2017